

3D Stereoscopic Vision People Counter

3D PRO2™



Product Code: FC-F3DP02

AI POWERED 3D STEREO VISION PEOPLE COUNTING

- Unparalleled Accuracy of Up to 99.5%
- Real-time Occupancy Counting
- Excellent Lifespan MBTF 25 years
- Bi-directional Counting
- Accurate Counting with Video Proof
- Superior Processing Power-Improved 3D Counting Accuracy

WIFI/BLUETOOTH COUNTING

- Available metrics are outside traffic, visit duration, returning rate and traffic flow profiling.

STAFF EXCLUSION

- Automated staff counting using the AI-powered re-identification function requires no pre-registration, accessories, or unique uniforms.

OPTIMISED FOR ALL ENVIRONMENTS

- One lens fits all heights, caters for different types of stores with varying ceiling heights, as low as 2.1m to 4.5m.
- Widest Coverage. Equipped with 160 degree dual fisheye lens, reduce the total number of counters required.
- Superior Heat Dissipation. Enclosed in an aluminium unibody casing, prolong the lifespan of electronic components.
- Low-light/ Night Mode Counting with External Infrared Light
- Water Leakage-Proof. Enclosed in splash proof casing to reduce the counter failure rate due to the common issues like water leakage on the ceiling.

EASY TO INSTALL AND SET UP

- More Compact Form Factor
- 1-year Manufacturer Warranty
- GPIO Functionality. Integrate occupancy counting with all entrances and exits.

TECHNICAL DATA

Device Dimension (mm)	154 (W) x 59 (D) x 40 (H)
Packing Dimension (mm)	200 (W) x 170 (D) x 50(H)
Weight	Device: 0.4 kg Packing: 0.86 kg
Camera	2x 5MP, 160°, 5MP omni-vision 5647 camera modules
Illumination	Minimum 1 lux (with external Infrared light source)
Frame Rate	25 fps (Live Stream of counting will only display 1024x780 resolution to reduce bandwidth sent to database for verification purpose)
Indicator	RGB LED status indicator
Casing	Made by Aluminium oxide alloy for dust resistance with 1mm tempered glass lens-covering.
IP Rating	IP64
Storage	Built-in, 32 GB eMMC Storage
Memory	4 GB
Ideal Mounting Height	2.1 metres - 4.5 metres
Operating Environment	Temperature 10°C to 45°C, Humidity 10% to 90%
Storage Environment	Temperature -40°C to 70°C, Humidity 10% to 95%
Tracking Technology	3D-Spacing Mapping Video Tracking Technology and background removal on static objects.
NPU	5 TOPs
Field Upgradable	Manual / Auto Software upgrade
Power Over Ethernet	Yes (IEEE802.3at)
PoE Mode	Mode A/B
Voltage	48~56 VDC
Power Consumption	6W
Cabling	Cat5e/Cat6, 100Mbps
Origin	Made in the UK

FIRMWARE SPECIFICATION FOR DEVICE LEVEL

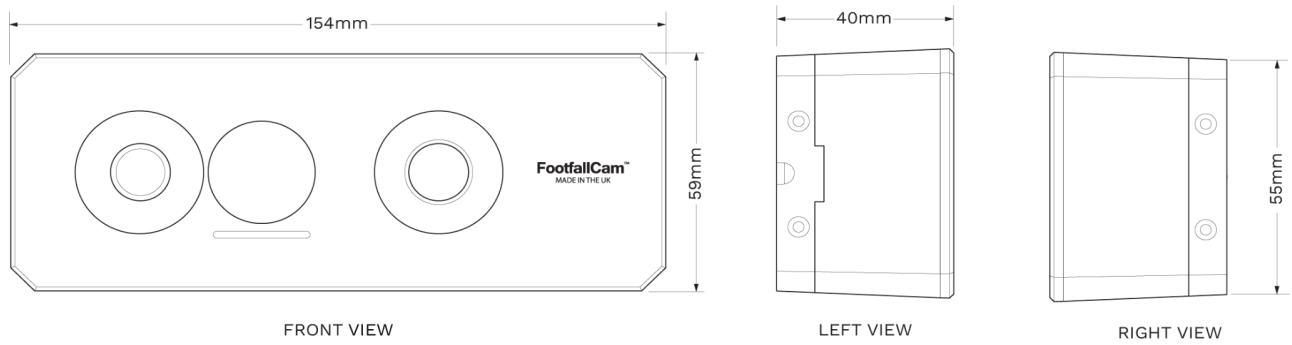
Interface	Http; Https
User Levels	2 levels: Administrator, Standard Usury
Operating System	Footfall Counter OS
Ethernet	10/100 Mb Ethernet
Data Delivery	TCP/IP
Database Type	SQLite
Report Format	csv, .xml, .txt
Data Storage on counter level	Hourly Data: 300 days; Raw Data: 7 days; 3 days *Data which has sent to server will keep permanently in server level
Data Backup	Yes
Firmware Feature	Secure Operating System with Multicore Processor, Adaptive IR based on Lighting Conditions, Device Health Check, Built-in External Watchdog
Data Upload to Server	Every Hour
Average Data Transfer Rate*	10.0 kilobytes/hour

*Average Data Transfer Rate is measured with a predefined sample size of 20 requests per hour

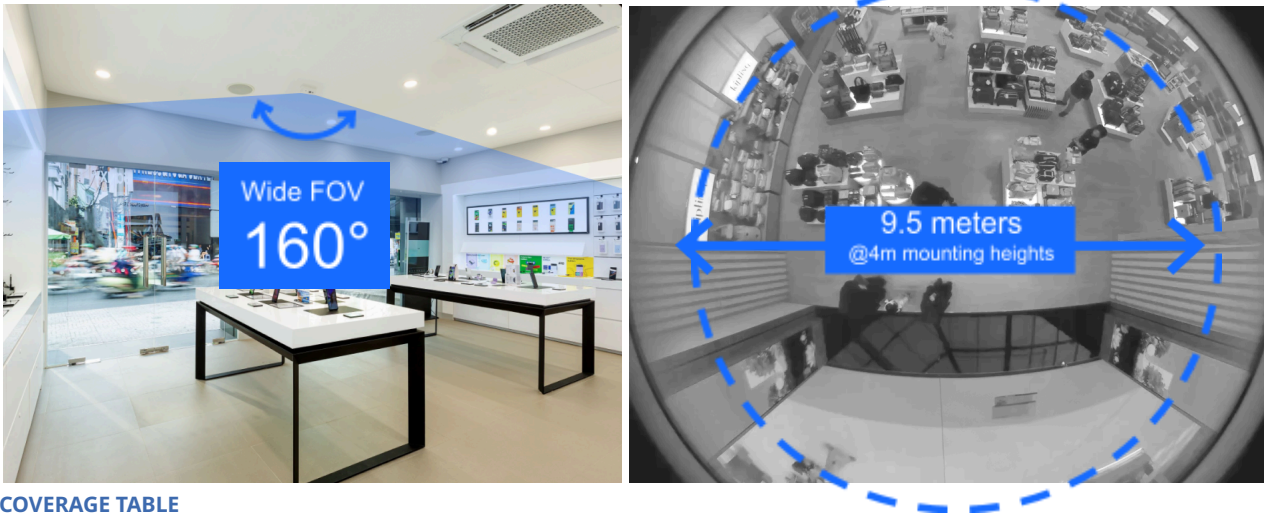
Do you need further information or have a question? Please visit www.footfallcam.com

©2002-2023 Footfall counter is trademark application of FootfallCam in various jurisdictions. We reserve the right to introduce modifications without notice. All other company names and products are trademarks of their respective companies.

PRODUCT DIMENSION



Wide Field of View (FOV) - 160°



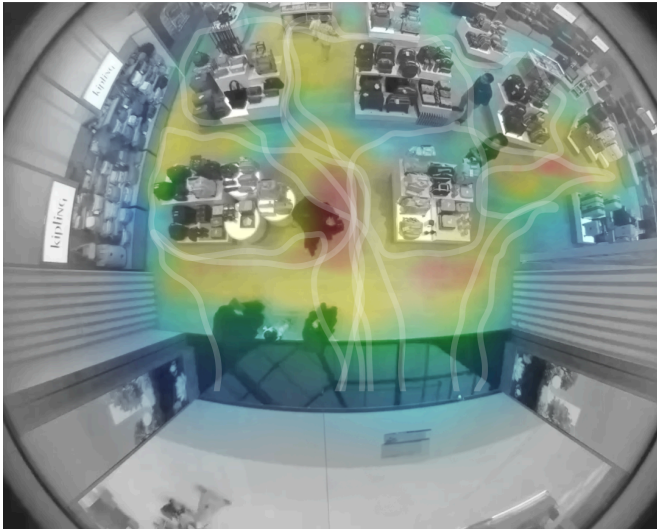
COVERAGE TABLE

Ceiling Height (m)	Lens Degree	Coverage Area (m) (Horizontal FOV x Vertical FOV)
2.1	160	5.01 x 3.75 m
2.5	160	5.96 x 4.47 m
3.0	160	7.15 x 5.36 m
3.5	160	8.34 x 6.26 m
4.0	160	9.53 x 7.15 m
4.5	160	10.73 x 8.04 m

Notes:

1. For mounting height >4.50m, please contact sales@footfallcam.com for another mode recommendation of FootfallCam.
2. For mounting height >8.00m, recommend to use drop pole when installing the counter to the acceptable range

AI-Powered Re-Identification



Footfall Profiling

- Demographic Analysis
- Unique Visitors: Discount visitors who have re-entered the store within the last 15 minutes.

In-Store Analytics

- Heatmap
- Store-wide Path Tracking
- Customer Engagement: Measure the passer-by, engaged visitors and engaged duration for each area.
- Shopper Type Categorisation: Based on the shopping journey and shoppers' behaviour

Automatic Staff Exclusion

- ✗ No Tags
- ✗ No Staff Pre-Registration
- ✗ No Designated Walk Paths for Staffs
- ✗ No Unique Uniform